



# CLASS -III

# SUBJECT :SCIENCE

## Parts of a Plant

## Let us answer





Let us answer

A. Tick (✓) the correct answer.

1. In addition to the stem, branches, leaves and buds, the shoot of a plant bears
  - a. flowers and roots.
  - b. fruits and roots.
  - c. flowers and fruits.
2. We eat the leaves of this plant.
  - a. Potato
  - b. tomato
  - c. Spinach
3. The stem of this plant is soft, green and weak.
  - a. neem
  - b. Coconut
  - c. money plant.
4. The leaf of a plant is called its
  - a. bathroom
  - b. Kitchen
  - c. bedroom.
5. Most fruits have \_\_\_\_\_ these inside them.
  - a. beads
  - b. Seeds
  - c. seats.

B Match the statement with the correct word

- |  |        |
|--|--------|
| 1. It fixes the plant in the soil            | Seed   |
| 2. It takes water from the root to the soil. | flower |
| 3. It makes food for the plant.              | Stem   |
| 4. It changes into a fruit.                  | leaf   |
| 5. It grows into a new plant                 | root   |





C. In which figure, are the parts of the plant correctly labelled?

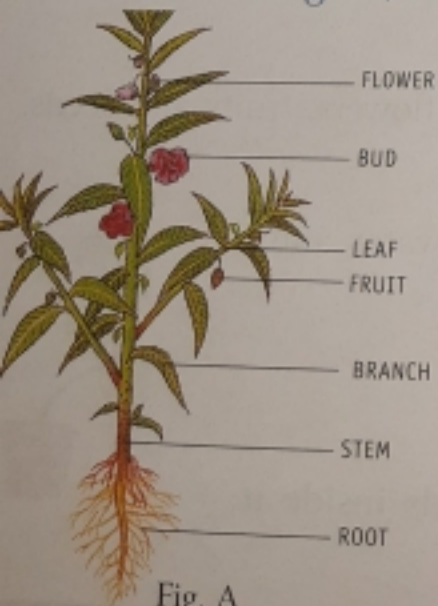


Fig. A

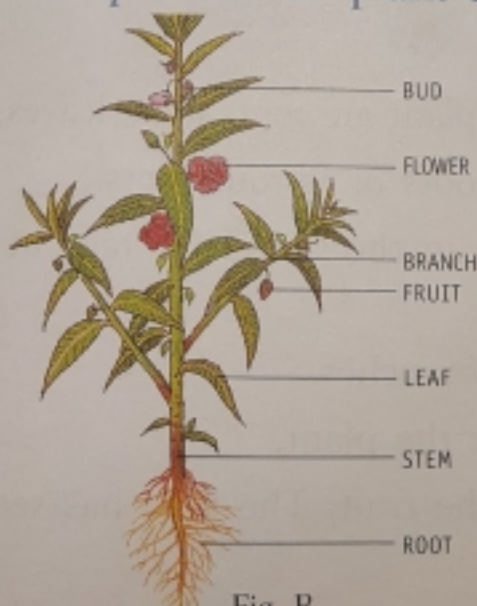


Fig. B



Fig. C





D. Read the clues and unscramble the letters to get the names of the parts of a plant. Write the names on the blanks.

1. It grows above the ground. TEMS

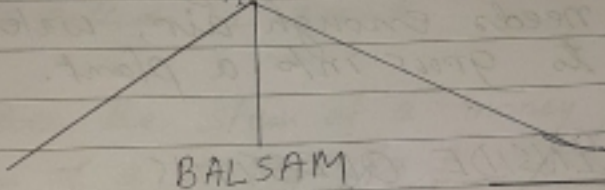
2. It makes the food for the plant. FEAL

3. Most flowers grow into these. RUISTF

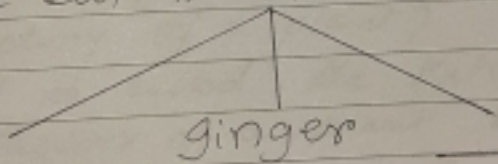
4. It grows below the ground. TORO

E. Fill in the right words in the empty boxes.

Tap root is found in



We eat the stem of



F. Answer these questions.

1. How is the root of a plant different from its shoot?

Root	Shoot
a. It grows below the ground	a) It grows above the ground
b. The root fixes the plant in the soil.	b) The shoot holds the plant upright and support its branches.





Saathi

Date: / /

2. Write two functions of the root.

Ans: Two functions of the root are

- i) It fixes the plant in the soil.
- ii) It enables the plant to take in water and salts from the soil.

3. What are the uses of stem?

Ans: The uses of stem are - the stem holds the plant upright and support its branches. The stem carries water to the leaves and food made by the leaves to different parts of the plant.

4. What does a seed need to grow into a plant?

Ans: A seed needs enough air, water and warmth to grow into a plant.



INSIDE QUESTIONS

Saathi

Date \_\_\_\_\_

1. What is a tap root?

Ans: When a main root grows from the end of the stem and many small roots grow from the main root, it is a tap root.

2. What is a fibrous root?

Ans: When a number of roots grow from the end of a stem, it is a fibrous root.

3. Why do some vegetables have swollen roots?

Ans: Some vegetables like carrots, radish and beetroot have thick and swollen roots because food is stored in them.

4. What is a trunk?

Ans: The hard, strong and woody stem of a tree is called a trunk.

5. Why does the stem of a money plant need support?

Ans: The stem of a money plant is soft, green and weak so it needs support to stay upright.

6. Why is a leaf called the kitchen or the food factory of a plant?

Ans: A leaf is called the kitchen or the food factory of a plant because it makes food for the plant with the help of air, water and sunlight.

7. Why do we eat leaves of some plants?

Ans: We eat leaves of some plants because leaves of some plants like cabbage, spinach and lettuce store food in their leaves.





Date \_\_\_/\_\_\_/\_\_\_

8. Why does a farmer feel happy when he sees flowers on his mango trees.

Ans: A farmer feels happy when he sees flowers on his mango trees because he knows that these flowers will turn into fruits.

